



Semley House, Belgravia  
London SW1W

GARTON JONES.COM



# Semley House, Belgravia London, SW1W

GARTON JONES.COM

8 Gatliff Road  
Grosvenor  
Waterside  
Chelsea  
London  
SW1W 8DP

Sales +44 (0) 20 7730 5007  
gws@gartonjones.com  
www.gartonjones.com

## £725 Per Week

A 2 DOUBLE BEDROOM split level apartment to rent of approx. 782sq.ft (72.7sq.m) of this established building overlooking Ebury Square in Belgravia. This FURNISHED property has an open plan reception room with dining space, fitted kitchen with Zanussi appliances, shower room and a small PRIVATE BALCONY overlooking Ebury Square. There is storage including fitted wardrobes to both bedrooms making an ideal apartment for two sharers.

Available via our office at Grosvenor Waterside underneath Bramah House (approx. 5 min walk). Belgravia and Elizabeth Street, Knightsbridge, and Sloane Square are within easy access and Victoria Mainline station with Gatwick Express are just a few minutes' walk.

Please note the furniture may differ or not be included to that shown in current photos.

Council Tax: Westminster Council (band C)

EPC Rating: C (80)

12 month minimum term. 5 week deposit required.

To check broadband and mobile phone coverage, please visit Ofcom: [ofcom.org.uk/phones-telecoms-and-internet/advice-for-consumers/advice/ofcom-checker](http://ofcom.org.uk/phones-telecoms-and-internet/advice-for-consumers/advice/ofcom-checker)

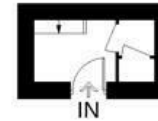
- 782 Sq.ft (72.7 Sq.m)
- 2 Double Bedrooms
- Open Plan Reception Room
- Integrated Kitchen
- Modern Bathroom
- Private Balcony
- Split Level Apartment
- Within Walking Distance of Belgravia, Elizabeth Street, & Knightsbridge
- Close to Victoria Station & Sloane Square



EPC certificate available on request.

## Semley House

Approximate Gross Internal Area = 782 sq ft / 72.7 sq m



28 sq ft / 2.6 sq m

754 sq ft / 70 sq m

Not to scale, for guidance only and must not be relied upon as a statement of fact.  
All measurements and areas are approximate only and have been prepared in accordance with the current edition of the RICS Code of Measuring Practice.

